

The Intumex® HY Collar is designed to be fixed to formwork prior to pouring of concrete floor slabs. It has been tested with various uPVC and HDPE pipes achieving a fire resistance up to 240 minutes in accordance with AS1530: Part 4 and AS4072: Part 1.

The Intumex® HY Collar is available in three sizes:

- 1) Small, for pipes up to a nominal 65mm diameter;
- 2) Medium, for pipes up to a nominal 100mm diameter; and
- 3) Large, for pipes of a nominal 150mm diameter.

Please check with Intumex before installing Intumex® HY Collars to ensure that the size and plastic type of the pipe to be used is compatible with the size of the collar.

Intumex® HY

Installation Guidelines

Table 1. Performance of 65mm Intumex® HY Collars protecting uPVC and HDPE Pipes

Nominal Pipe Size	FRL		
	120mm Slab	150mm Slab	170mm Slab
40mm uPVC	-/240/120	-/240/180	-/240/240
50mm uPVC	-/240/120	-/240/180	-/240/240
65mm uPVC	-/240/120	-/240/180	-/240/240
40mm HDPE	-/240/120	-/240/180	-/240/240
50mm HDPE	-/180/120	-/180/180	-/180/180
56mm HDPE	-/240/120	-/240/180	-/240/240
63mm HDPE	-/120/120	-/120/120	-/120/120

Table 2. Performance of 100mm Intumex® HY Collars protecting uPVC and HDPE Pipes

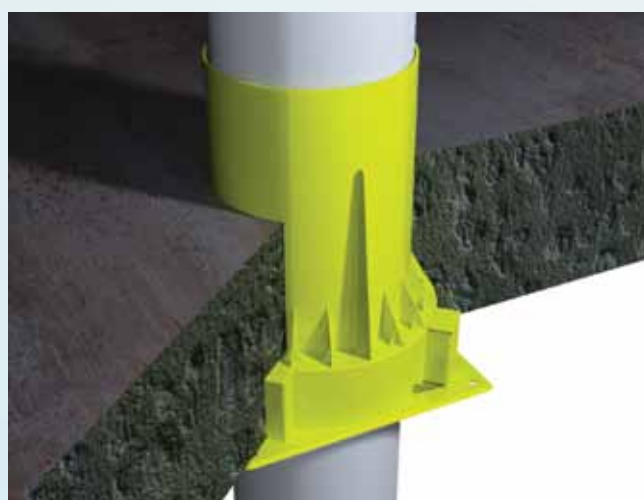
Nominal Pipe Size	FRL		
	120mm Slab	150mm Slab	170mm Slab
100mm uPVC	-/240/120	-/240/180	-/240/240
90mm HDPE	-/240/120	-/240/180	-/240/180
110mm HDPE	-/240/120	-/240/180	-/240/240

Table 3. Performance of 150mm Intumex® HY Collars protecting uPVC and HDPE Pipes

Nominal Pipe Size	FRL		
	120mm Slab	150mm Slab	170mm Slab
150mm uPVC	-/240/120	-/240/180	-/240/180
150mm HDPE	-/240/-	-/240/-	-/240/-

Dimensions guide

Collar no.	Body (mm)						Flange (mm)
	H	H1	H2	D1	D2	D3	D4
IHY 65	250	45	205	95	132	97	154
IHY 100	250	57	193	140	178	142	198
IHY 150	250	57	193	194	232	197	253

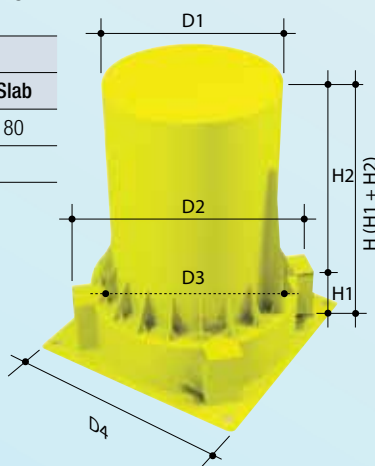


Installation method

Intumex® HY Collars can accommodate the pipe fitting inside the soffit of the slab, creating considerable space savings.

Place the Intumex® HY Collar on the formwork. Secure it into position with 20mm x 3mm flat head clouts, nailed through the notches provided. **DO NOT SKEW THE NAILS.** After the formwork has been stripped and the pipe is ready to be placed into position, knock out the cap from the top of the collar and insert the pipe section through the collar.

It should be noted that if the pipe is pushed in from the top, the rubber seal will be forced downwards. Lift the pipe slightly to ensure that the rubber seal projects upwards. The gap between the pipe and the collar must be back-filled with concrete or commercial grade mortar mix.



Intumex provides a comprehensive range of fire protection systems for compartmentation, fire resistant air and cable ducts, structural steel protection, partitions and fire stopping seals. For complete professional advice, please contact your local Intumex distributor immediately.

Intumex Asia Pacific

MALAYSIA Unit 19-02-01, Level 2, PNB Damansara, No.19 Lorong Dungun, Damansara Heights, 50490 Kuala Lumpur.
Tel: +60 (3) 2095 5111. Fax: +60 (3) 2095 6111 **HONG KONG** Room 1011, C.C. Wu Building, 302-308 Hennessy Road, Wanchai.
Tel: +852 2895 0265. Fax: +852 2576 0216 **AUSTRALIA** 1 Scotland Road, Mile End South, SA 5031. Tel: +61 (8) 8352 6759.
Fax: +61 (8) 8352 1014 **SINGAPORE** 10 Science Park Road, #03-14 The Alpha, Singapore Science Park II, Singapore 117684.
Tel: +65 6292 7888. Fax: +65 6294 2576

www.intumex-fs.com www.intumex-ap.com

